



ADAMS

*Advanced Deployable
Aircraft Mobile
System*

COMBATING CORROSION THROUGH ADVANCED MOBILE SHELTERS

*THE NEXT GENERATION OF RAPIDLY
DEPLOYABLE SHELTER SYSTEMS.*

GREG LAUE

PRESIDENT/OWNER

GREG.LAUE@T9LAB.COM

CELL: 256-701-3640

BRAD BOVE

SENIOR ACCOUNT EXECUTIVE

BRAD.BOVE@T9LAB.COM

CELL: 808-798-9730

HARRY SEIBERT

*SENIOR DIRECTOR,
BUSINESS DEVELOPMENT
AND CAPTURE*

HARRY.SEIBERT@T9LAB.COM

CELL: 850-797-3508

SBIR DATA RIGHTS

Contract No. FA864921P0601 and FA868421CB018

Contractor Name: Trac9, LLC.

Contractor Address: 3460 Stanwood Blvd, Huntsville, AL 35811

Expiration of SBIR Data: 2041

Protection Period: 20 years

The Government's rights to use, modify, reproduce, release, perform, display, or disclose technical data or computer software marked with this legend are restricted during the period shown as provided in paragraph (b)(5) of the Rights in Noncommercial Technical Data and Computer Software–Small Business Innovation Research (SBIR) Program clause contained in the above identified contract. After the expiration date shown above, the Government has perpetual government purpose rights as provided in paragraph (b)(5) of that clause. Any reproduction of technical data, computer software, or portions thereof marked with this legend must also reproduce the markings.

**CURRENT AS OF:
23 JANUARY 2026**

- TRAC9 WHO WE ARE
- PRODUCT INFORMATION
- COMBATING CORROSION
- USAF LOCATIONS

MISSION Focused

Our products are designed to solve fundamental challenges in innovative ways, thinking outside the box with practical new concepts. We offer 100% U.S.-made, durable products. Our agile development process allows us to rapidly advance through all technology readiness stages. We foster a creative, rapid, efficient, iterative, and collaborative product culture, supported by a team of experienced technology leaders and business owners. We maintain an intense focus on product simplicity, durability, and sustainability.

TEAM FOCUSED

Based in **Huntsville, Alabama**, this small business is founded and staffed entirely by U.S. citizens. They maintain a curated, closely-held, U.S.-based supply chain and currently employ veterans from the USAF, USMC, Army, and Navy, ranging from field-level to HQ staff. Their dedicated team includes highly experienced engineers, craftsmen, and partners. The company focuses on vertically integrated manufacturing at Trac9, with a scalable and evolvable system. They pride themselves on being an agile, customer-focused team, adept at incorporating user inputs as openly and effectively as possible.





PRODUCT INFORMATION



H4

H9

H11

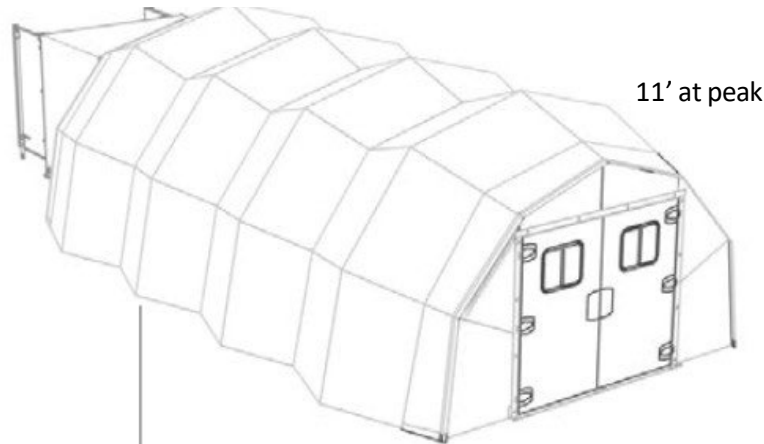
H15

H30 – Hangar
(proposed size - shown with F22)

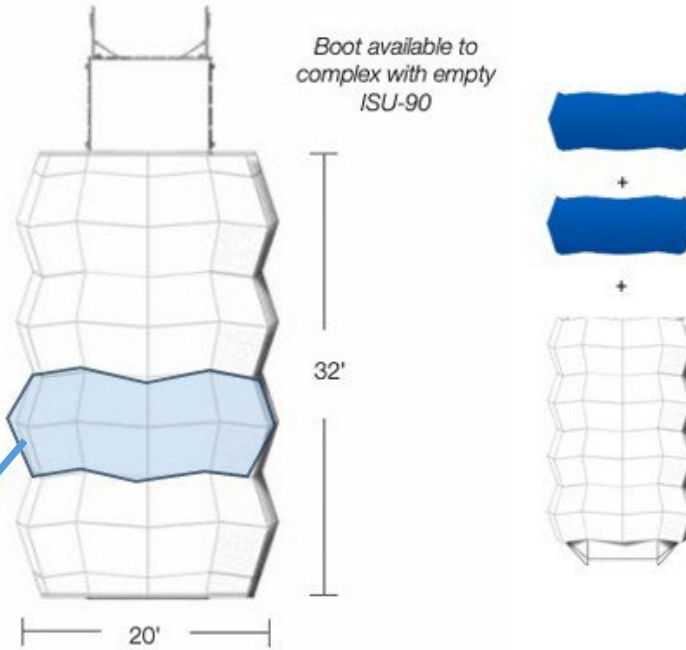
Fielded and in use by USAF & Army



ADAMS Shelter System



Arch modules are interoperable and allow shelters to increase in size or add functions with added arches

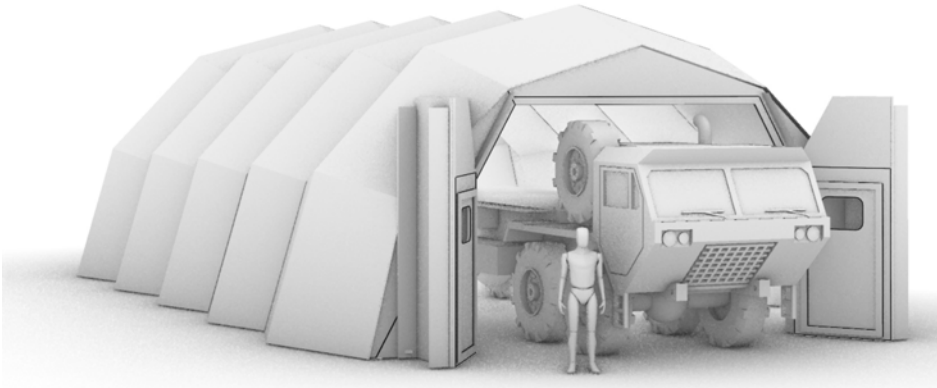


Arches are modules that can be connected together to form any length structure



- Area > 600sqft, indefinitely extendable in 120 sq ft increments
- 4-person setup < 2hrs, add 30min for electrical/HVAC/lights
- 2-person tear down/pack within ISU-90 in < 1.5 hrs
- Concealment fly sheets available – change color in minutes
- 120mph wind rating when anchored to concrete
- 70mph wind rating with no additional anchoring or stakes
- Weight of ADAMS Kit:
 - 4-arch ADAMS 4,281 lbs. (5,796 lbs. with ISU-90)
 - 3-arch ADAMS 3,495 lbs. (5,010 lbs. with ISU-90)

Protect & Reposition Assets Quickly



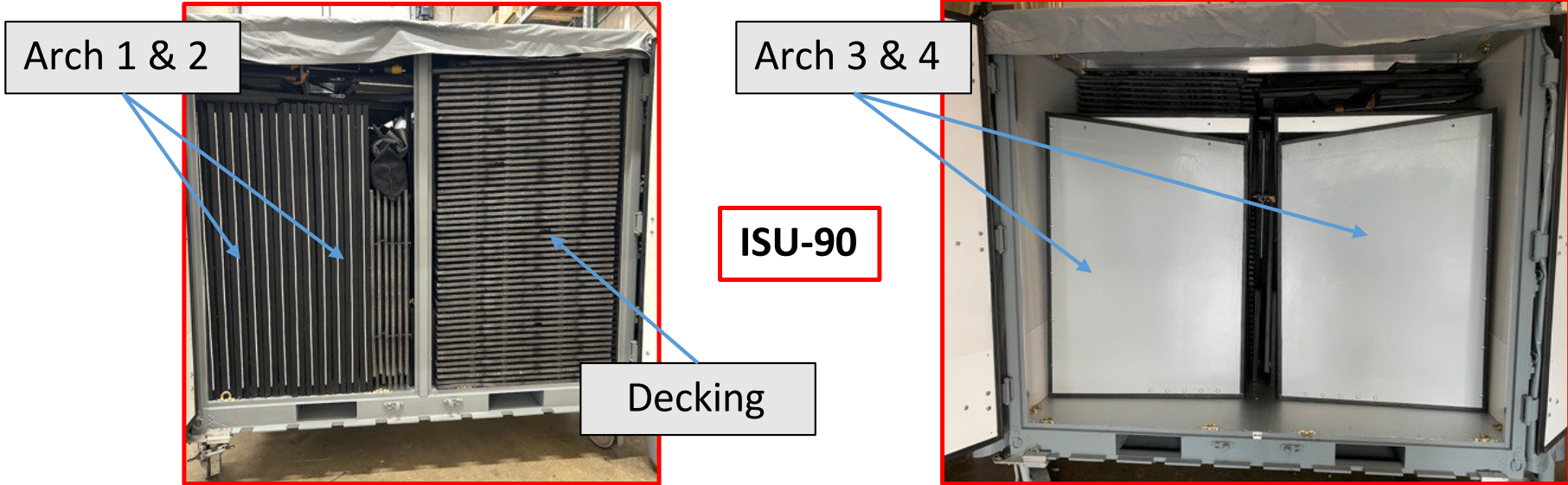
HVAC and Dehumidification Options

- Area > 1340sqft, indefinitely extendable in 250 sq ft increments
- 8-person setup < 6hrs, add 120min for electrical/HVAC/lights
- 6-person tear down/pack within ISU-90 in < 3 hrs
- Concealment fly sheets available – change color in minutes
- 80mph wind rating with no additional anchoring or stakes
- 120mph wind rating when anchored
- 150mph wind rating with addition of Typhoon Kit
- Available with Solar Trac Kit
- ADAMS Shelter comes completely integrated for connection to generator shore power with lighting and power receptacles
- 1 shelter plus all associated components packs onto 2 pallet positions
- All ADAMS Shelters are modular and easily integrate additional arches, components and support kits
- Decking can be added as required



- 6–8-person setup
- No Heavy Equipment
- Basic hand tools and a tall ladder
- Stacked arch assemblies are moved with standard moving dolly
- No construction or civil engineering skills required
- Easy enough anyone can assemble
- T-certs (black fasteners) within each panel enable attachment of accessories “rock-wall like”





463L Pallet



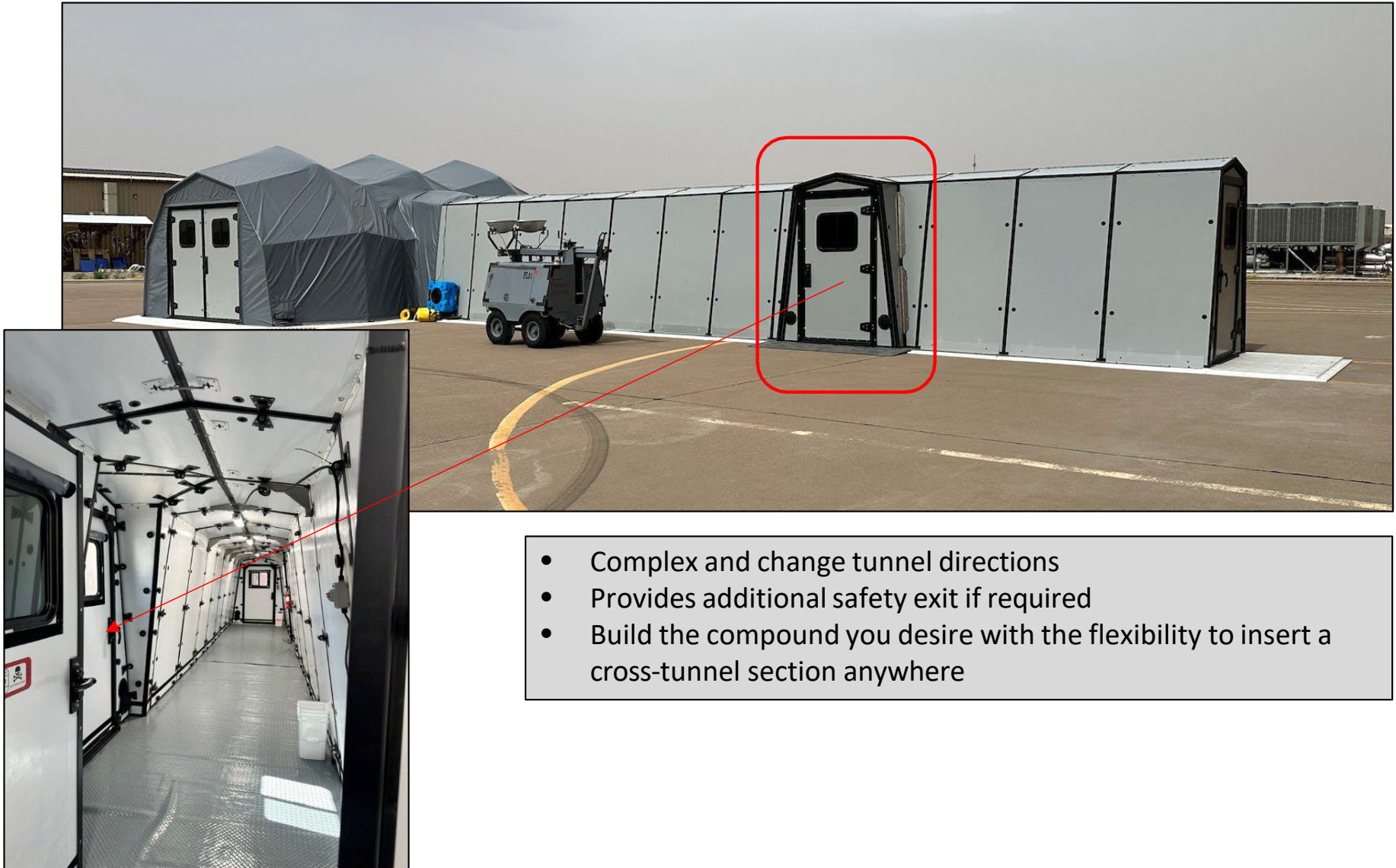
- Complex any size ADAMS together
- Tunnels can accommodate any distance required
- Connection arch can be positioned anywhere within the design



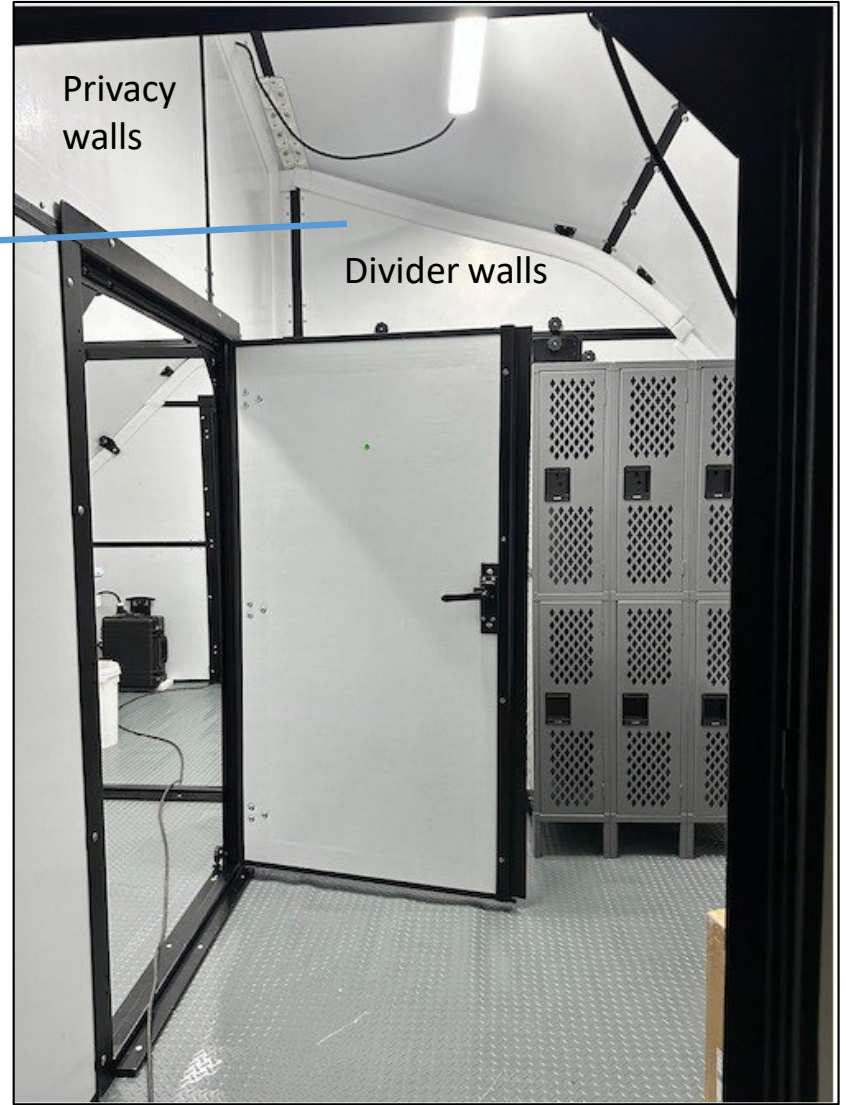
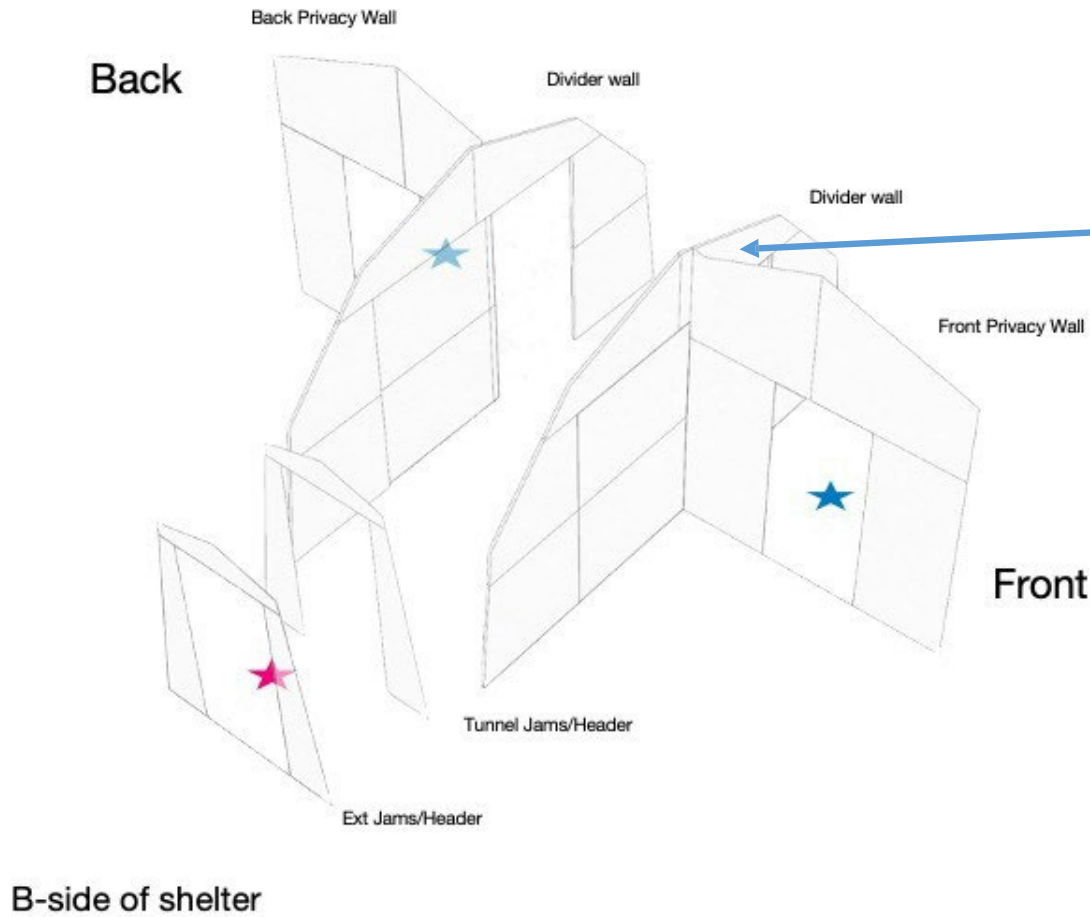
ADAMS

Advanced Deployable Aircraft Mobile System

This page governed by the SBIR/STTR Data Rights Legend set forth on the title page, which is incorporated herein, as if written out in full.



- Complex and change tunnel directions
- Provides additional safety exit if required
- Build the compound you desire with the flexibility to insert a cross-tunnel section anywhere



Solar Trac Kits



Customizable Fly Sheet Color



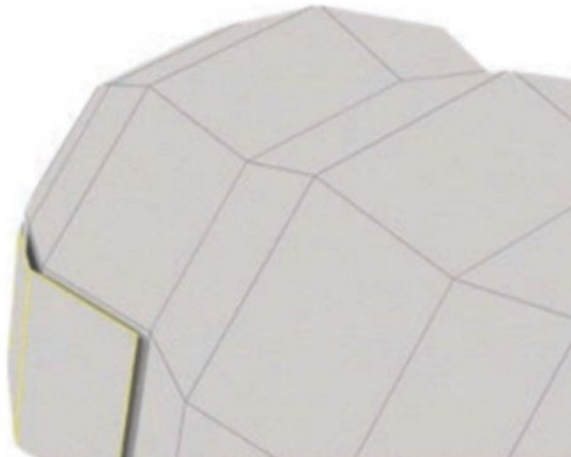
Sound reduction kit



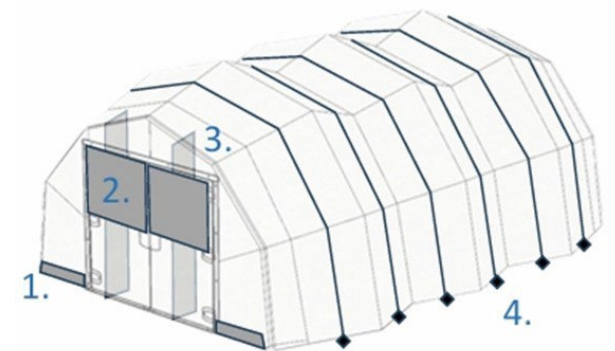
Radio frequency protection



Ballistic Protection



Typhoon kits



Cable anchors integrated into underside of flysheets. Weather flysheet not shown.



COMBATING CORROSION

AIRCRAFT MAINTENANCE & LOGISTICS READINESS

16



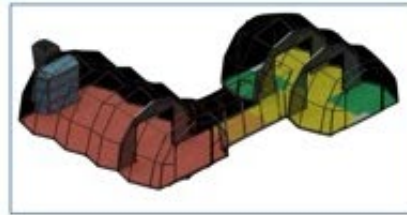
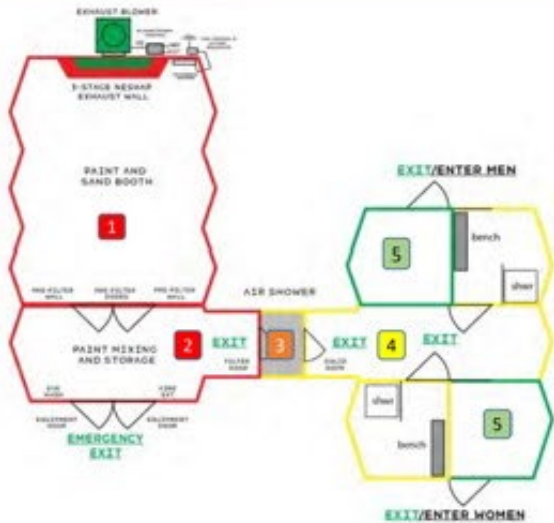
- Mobile CTK and Climate Control with Ability to Complex to ISU-90
- Production, Debrief, Command and Control, IMDS/GO81 Room, etc...
- Backshop Support – Structures Shop, Metals Tech, E/E, AGE, Fuels, Avionics, Additive Manufacturing Lab
- Unmanned Aircraft Hangar or Ground Control Station Platform to Support Drones
- Storage for Specialized Test Equipment to Prevent Corrosion of Assets in the Tropics
- Augments Aircraft Battle Damage Repair (ABDR) by Integrating with War Wagons and Tooling
- Mobile Logistics Readiness Squadron Supply Warehouse and Distribution Center
- CBRNE Decontamination Shelter
- Cargo Deployment Function/Joint Inspection Command Center During Exercise and Real-World Generations

*Photo above shows two 4-arch H11 shelters at Andersen AFB during REFORPAC (July 2025).

INTEGRATES WITH USAF AGE

- Low & High-volume portable air compressors
- Maglite Flood Light Cart
- Air Rover Cart
- Air Conditioners
- Heaters
- Top up ADAMS solar/battery kit with available AGE equipment

*Photos above show Air Rover Cart and FL-1D Floodlight Cart powering shelters.



- 1 Paint Booth
- 2 Transition Area (mixing/storage)
- 3 Tunnel + Air Shower
- 4 Transition (respirator cleaning, storage)
- 5 M or W change area



**NESHAP
3-Stage
Compliant
Filtration
System**



**Provides COA for
Facility
Sustainment
Restoration and
Modernization**

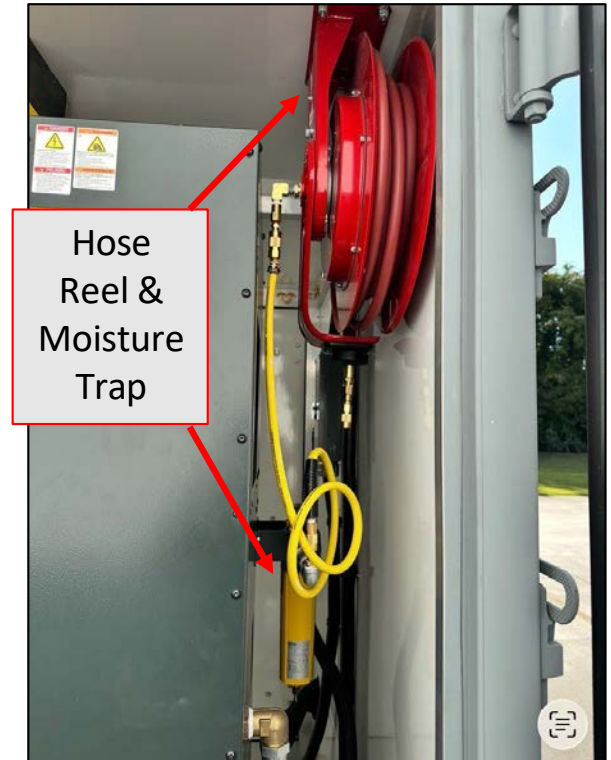
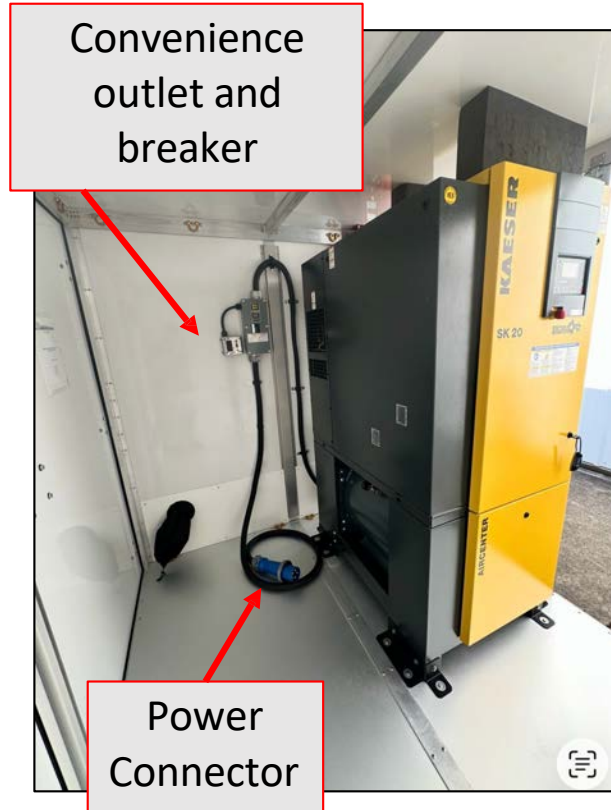
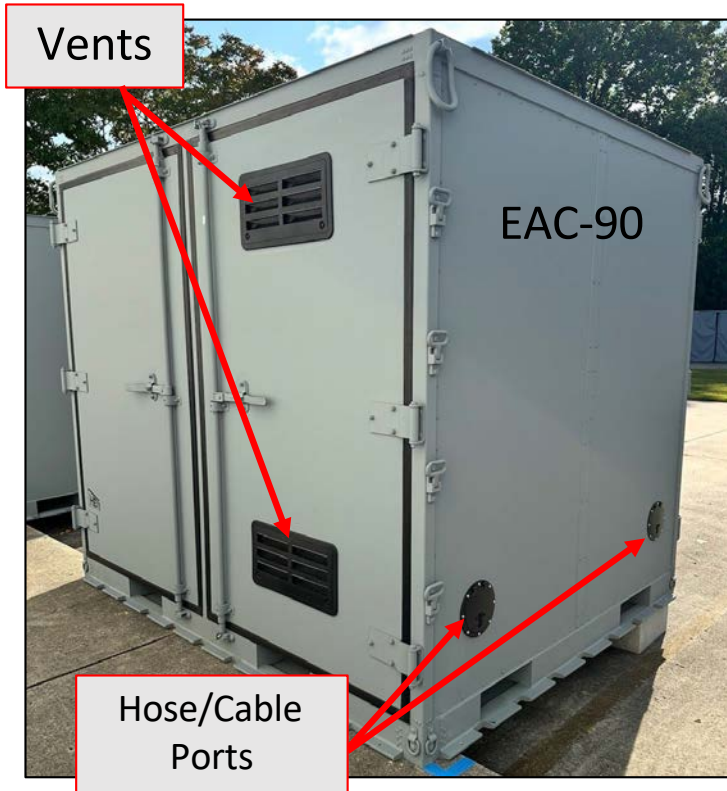
Shown configured with COTS split system. Also available configured with standard ducted ports

Double Doors for Equipment ingress/egress + make-up air inlets

Connector Arches + Tunnel + Air Shower

M/W Transition Shelter

Light-weight modular flysheets for added weather protection + thermal + color options

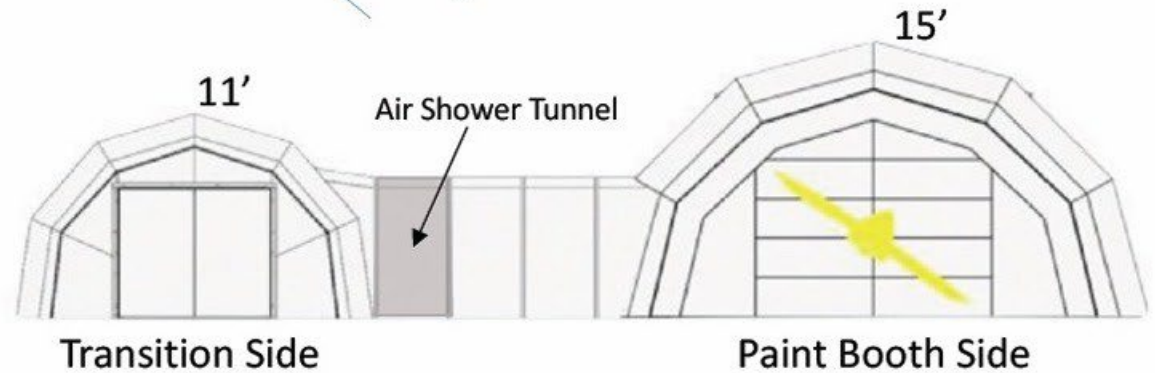
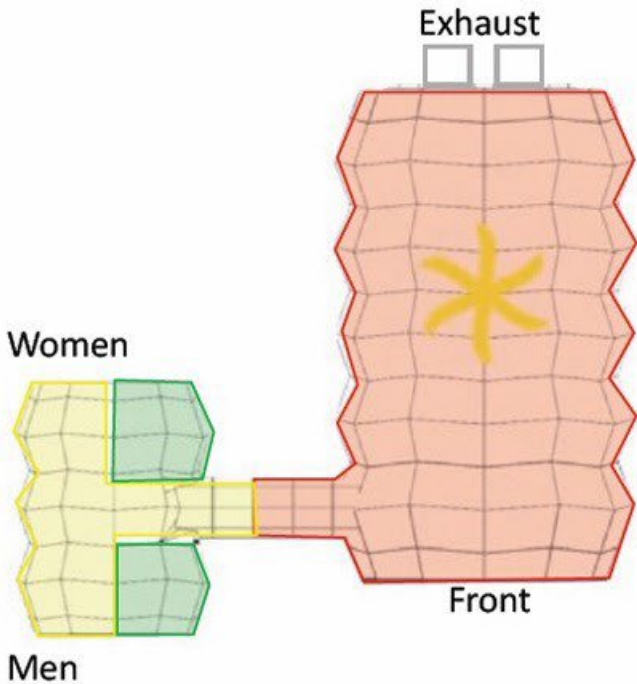
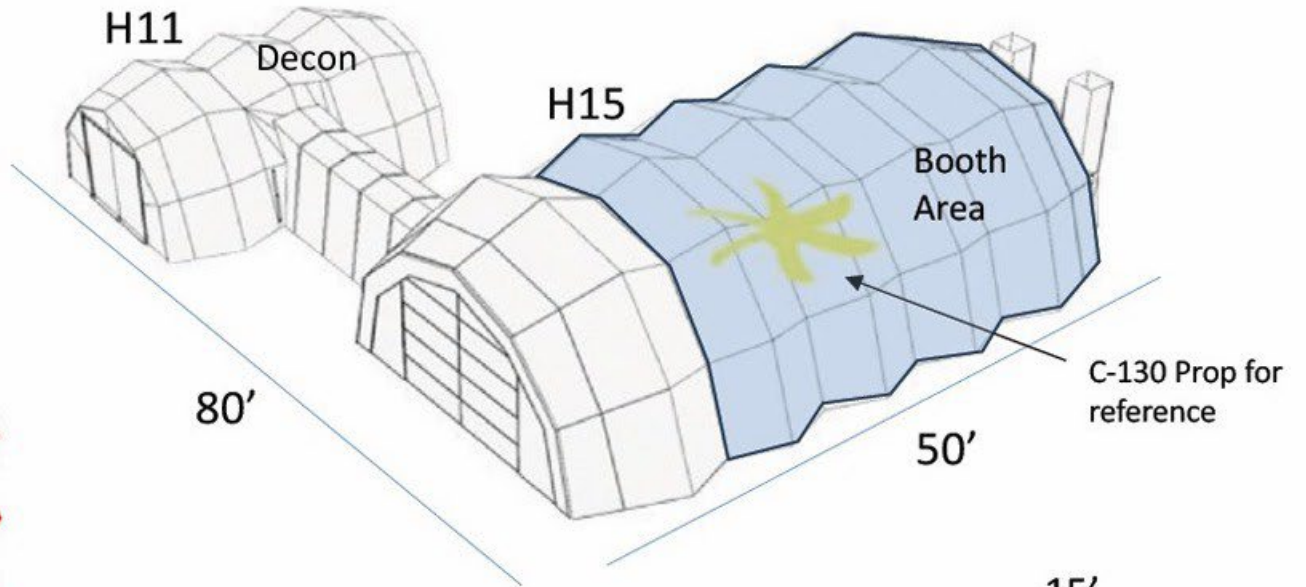


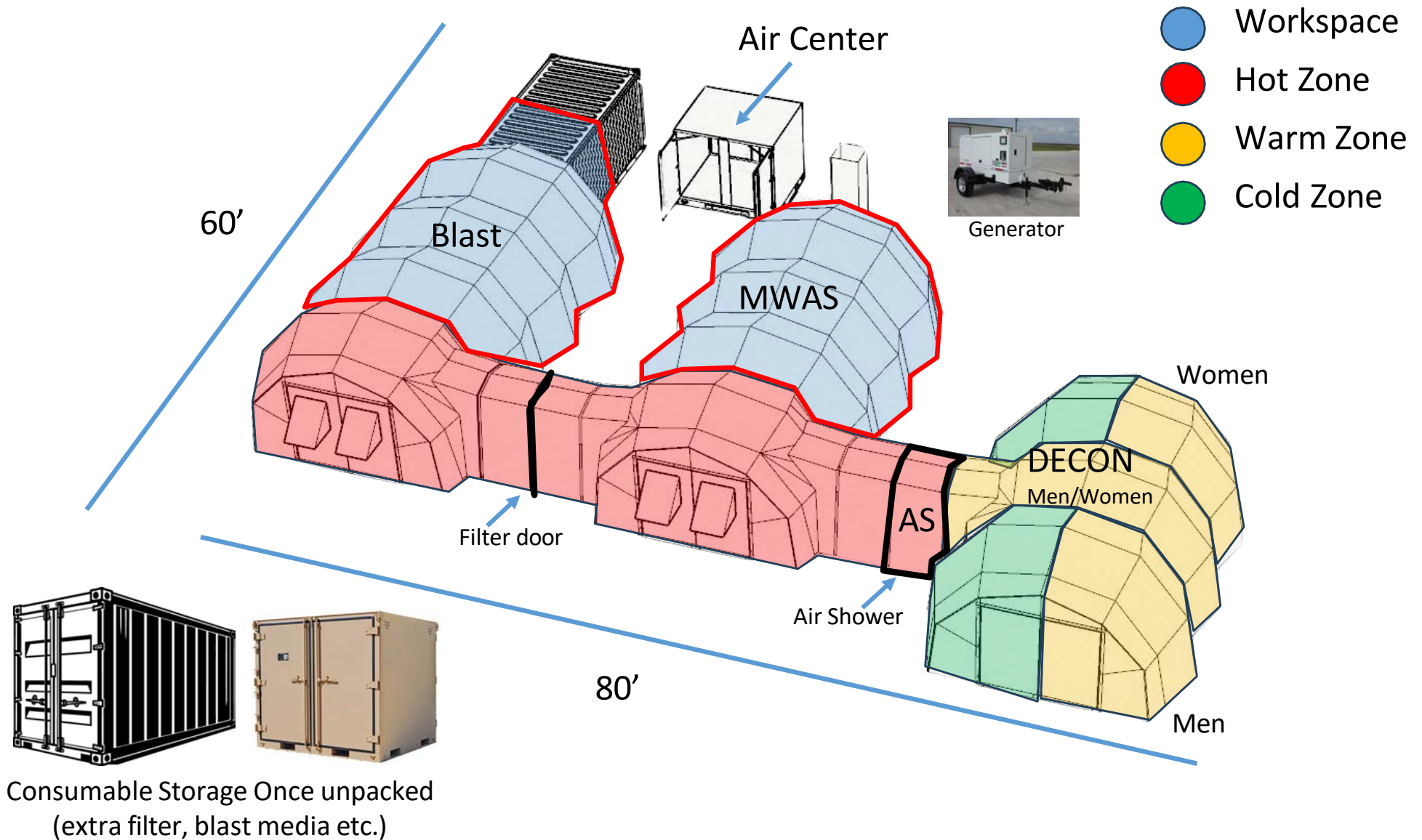
- Rotary Screw 20.0 hp Compressor, Sound pressure level 68dB (A)
- Electrical 208/230/460v/3ph/60Hz/90amp energy saving SIGMA PROFILE rotors.
- Flow rate at 125 psig 88.29 CFM with integrated air storage receiver tank
- Clean Air Refrigerated (r-513A) air dryer system with additional moisture trap
- SIGMA Control 2 advanced processor all inclusive packaged unit

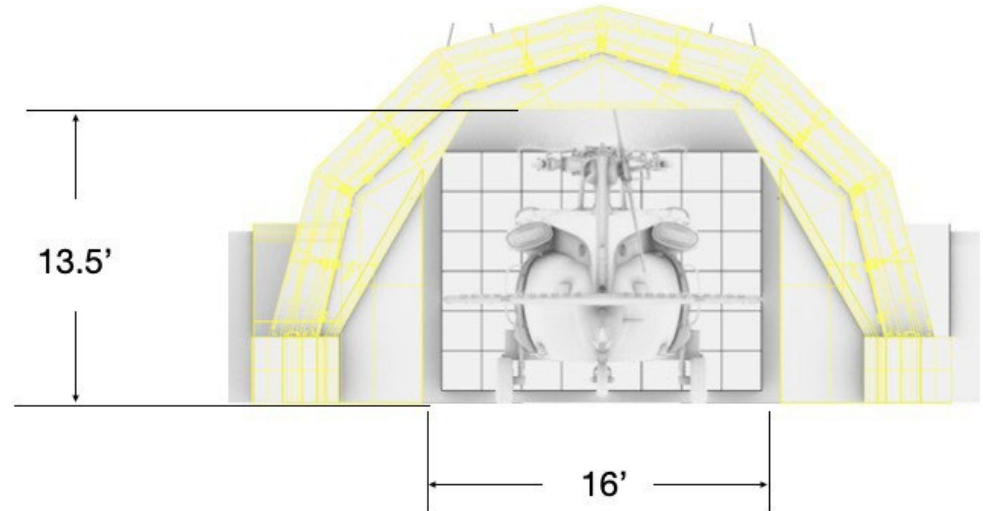
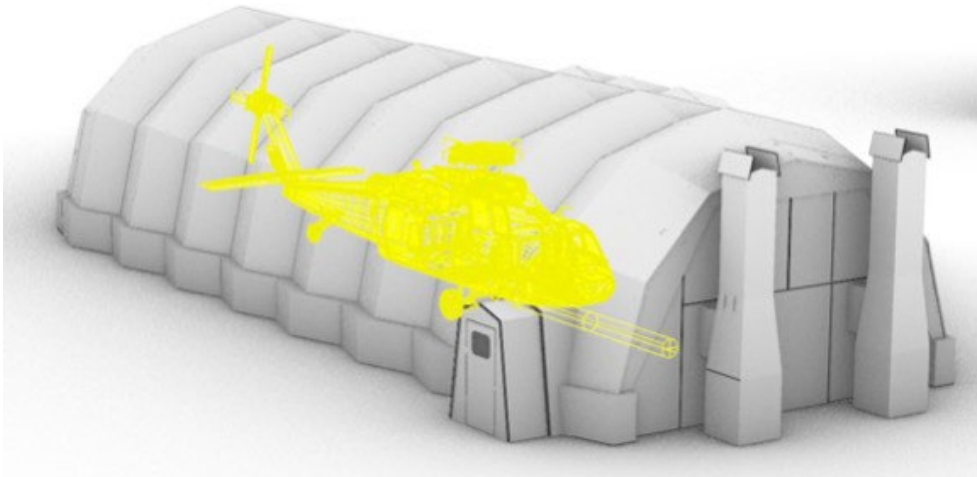
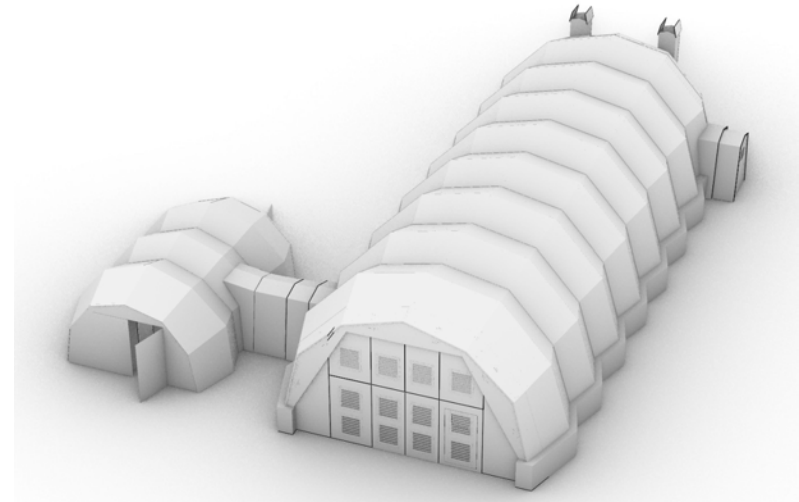
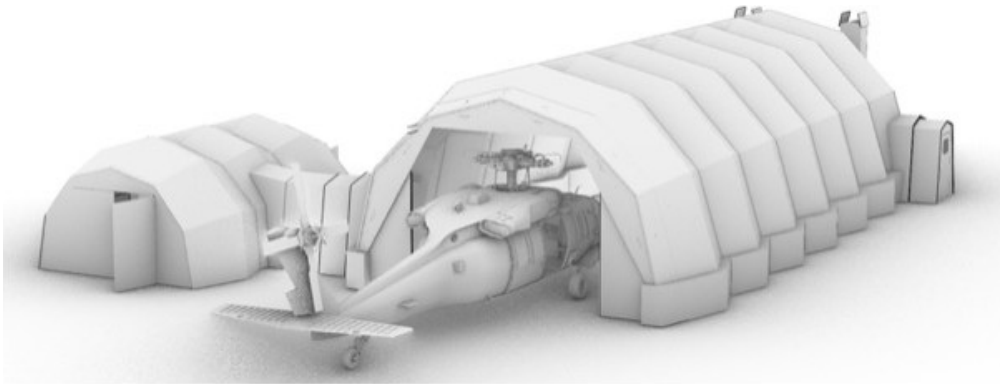


1. 4 arch shelter with A-side vestibule complexing arch + HVAC + decking
2. 3 arch shelter with B-side vestibule complexing arch + HVAC + decking
3. Air Center with Paint Booth Accessories Kit parts
4. Decontamination Shelter Accessories Kit + air shower tunnel

- Hot
- Warm
- Cold

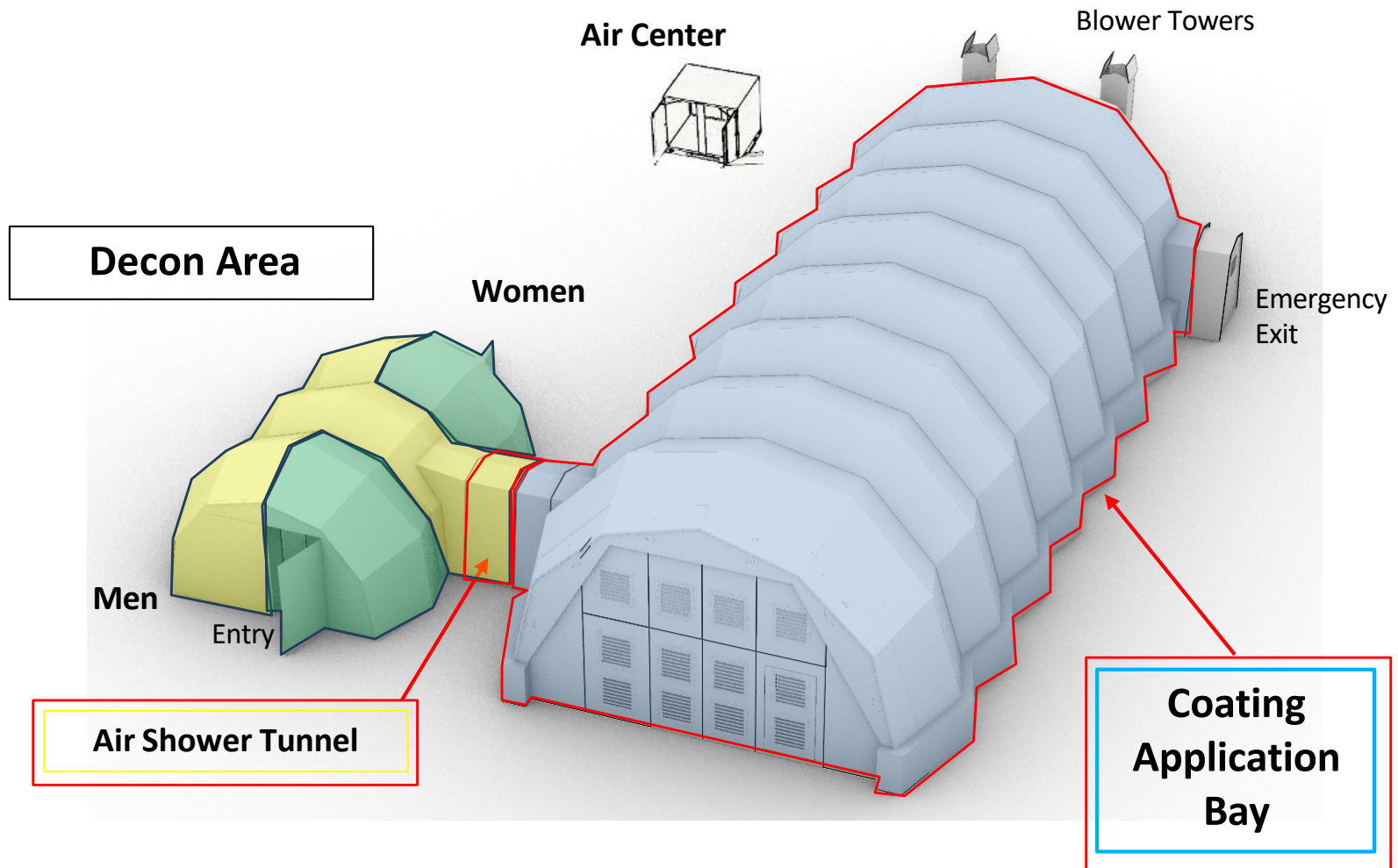


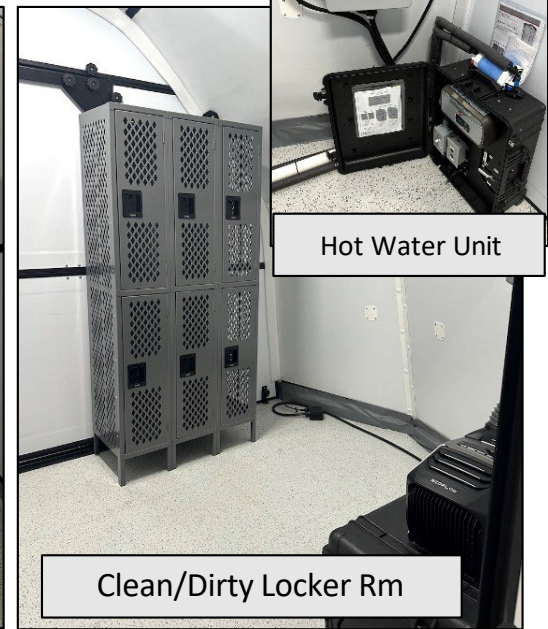
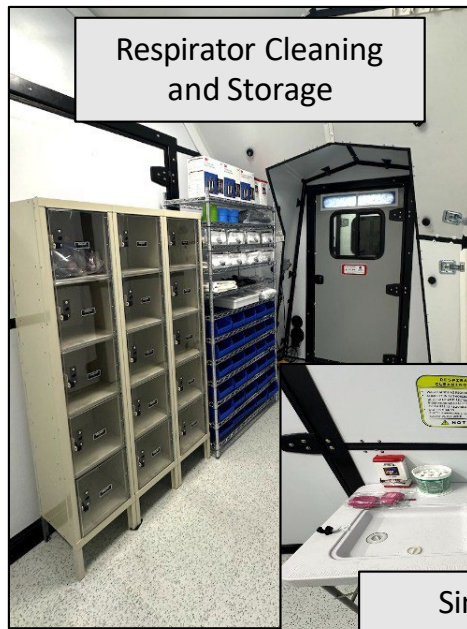
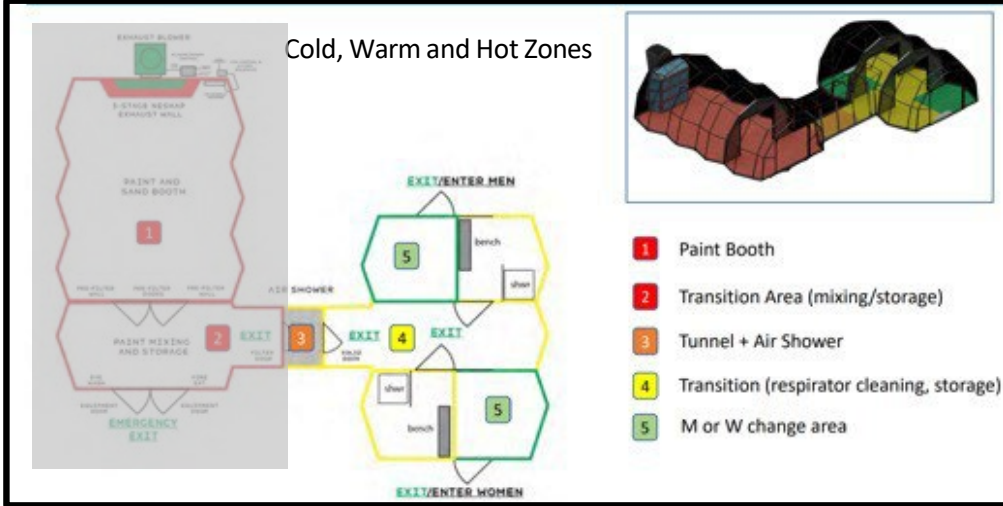




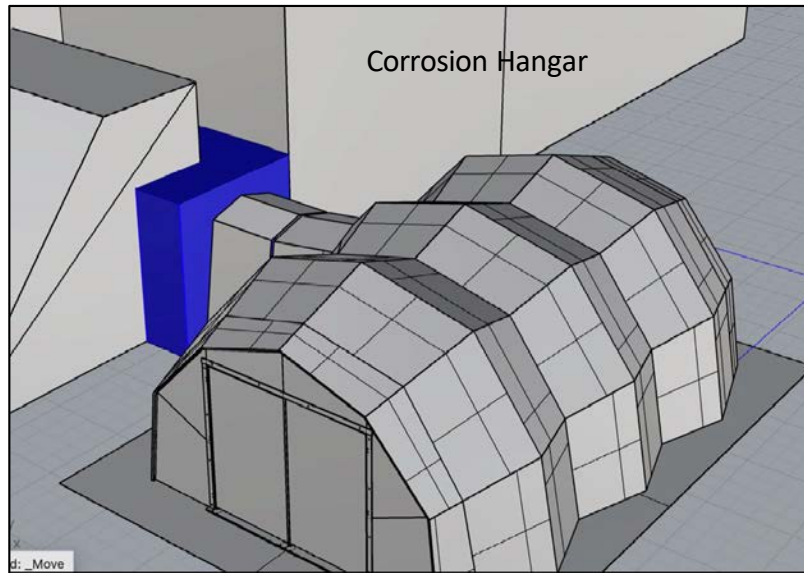
Zones

- Hot
- Warm
- Cold

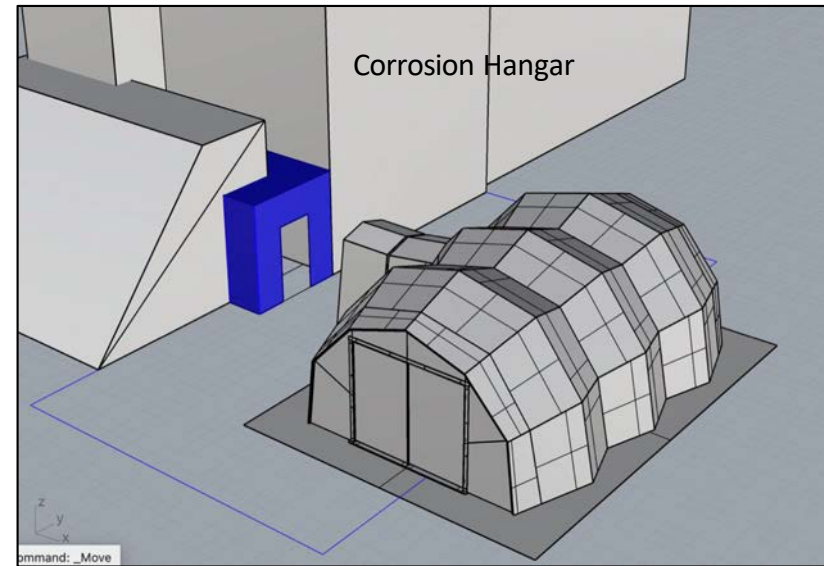




Mated to facility



Not physically mated to facility



- *Decontamination shelter locations*

- **Cannon AFB** (indoor use mated to facility)
- **Joint Base Pearl Harbor Hickam** (outdoor use not mated to facility)
- **Holloman AFB** (outdoor use not mated to facility)
- **Osan AFB** (indoor use not mated to facility)
- **NAS JRB Fort Worth** (outdoor use with paint complex)

Solar & Off Grid



HVAC & Dehumidification



Ceiling Fans



Equipment/Acft Parts





USAF LOCATIONS

- **32 USAF shelters delivered to date for a variety of use-cases**
 - **22 PACAF**
 - Andersen AFB, Guam (17)
 - Joint Base Pearl Harbor Hickam, HI (3)
 - Kadena AB, Japan
 - Osan AB, South Korea
 - **2 AFSOC, 2 AMC, 1 AFGSC, 4 AFRC, 1 AETC**
 - Cannon AFB, NM (2)
 - Holloman AFB, NM
 - Joint Base McGuire-Dix-Lakehurst, NJ
 - Little Rock AFB, AR
 - Minot AFB, ND
 - NAS JRB Fort Worth, TX (3)
 - Wright-Patterson AFB, OH

* Denotes Paint Complex or Transition Shelter



QUESTIONS?

GREG LAUE

PRESIDENT/OWNER

GREG.LAUE@T9LAB.COM

CELL: 256-701-3640

BRAD BOVE

SENIOR ACCOUNT EXECUTIVE

BRAD.BOVE@T9LAB.COM

CELL: 808-798-9730

HARRY SEIBERT

SENIOR DIRECTOR,

BUSINESS DEVELOPMENT AND CAPTURE

HARRY.SEIBERT@T9LAB.COM

CELL: 850-797-3508

